

FIG. 2

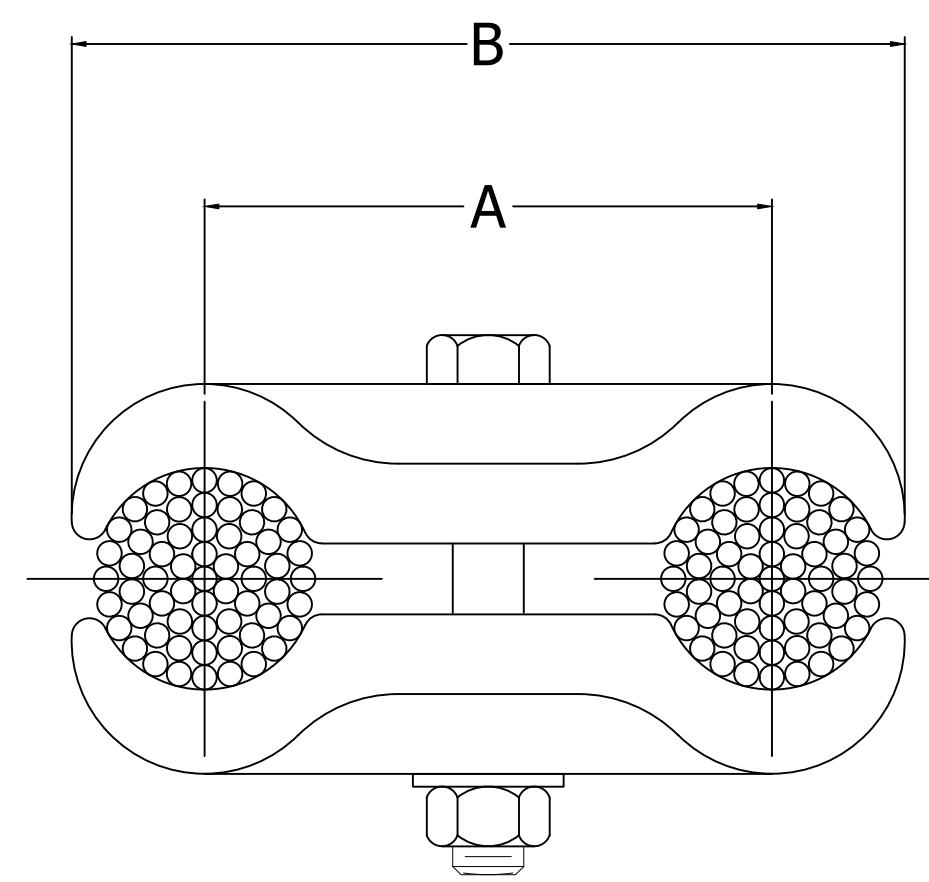


FIG. 1

NOTES:

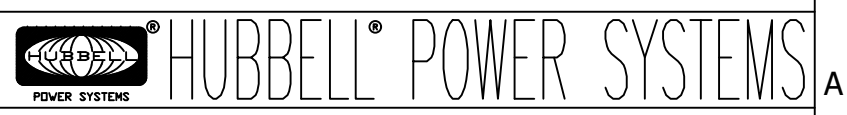
1. MATERIAL: 356-T6 ALUMINUM ALLOY
2. DIMENSION IN INCHES
3. FOR SUBSTATION USE ONLY, DO NOT USE FOR OVERHEAD TRANSMISSION LINES

80098	10/1/2019	HG	HG	PTB
EC #	DATE	CHG BY	CKD BY	APPD BY

DESC OF DWG:
 ADDED IMAGE OF SPACER IN TOP CORNER
 ADDED APCS-16-18 TO TABLE
 --
 --
 REASON (S) FOR CHANGE: --
 DISPOSITION OF MAT'L: --

THIRD ANGLE PROJECTION

CONFIDENTIAL: THIS DRAWING AND ITS CONTENTS ARE CONFIDENTIAL AND THE EXCLUSIVE PROPERTY OF HUBBELL POWER SYSTEMS. NO PUBLICATION, DISTRIBUTION, OR COPIES MAY BE MADE WITHOUT THE WRITTEN CONSENT OF HUBBELL POWER SYSTEMS. HUBBELL POWER SYSTEMS. UNPUBLISHED ALL RIGHTS RESERVED UNDER THE COPYRIGHT LAWS.



TITLE CABLE SPACER FOR BUNDLED ALUMINUM OR ACSR CONDUCTORS			
CATALOG NUMBER: APCS			
SIZE C	DWG NO. C-4936	PART / ASSY NO. SEE TABLE	REV 22
SCALE: NS	DRN BY: KH	DATE: 09/02/62	SHEET 1 OF 2

CATALOG NUMBER	CONDUCTOR RANGE (MCM)		DECIMAL RANGE	FIG. NO.	A	B	C	J
	AAC	ACSR						
APCS-9-4	350-600	336.4-477	0.681-0.893	1	4.000	5.250	1.750	0.500
APCS-9-8	350-600	336.4-477	0.681-0.893	2	8.000	9.250	1.750	0.500
APCS-9-12	350-600	336.4-477	0.681-0.893	2	12.000	13.250	1.750	0.500
APCS-11-4	600-900	556.5-795	0.893-1.108	1	4.000	5.500	1.750	0.500
APCS-11-8	600-900	556.5-795	0.893-1.108	2	8.000	9.500	1.750	0.500
APCS-11-12	600-900	556.5-795	0.893-1.108	2	12.000	13.500	1.750	0.500
APCS-13-4	900-1250	715.5-1113	1.036-1.293	1	4.000	5.750	2.125	0.625
APCS-13-6	900-1250	715.5-1113	1.036-1.293	2	6.000	7.750	2.125	0.500
APCS-13-8	900-1250	715.5-1113	1.036-1.293	2	8.000	9.750	2.125	0.500
APCS-13-12	900-1250	715.5-1113	1.036-1.293	2	12.000	13.750	2.125	0.500
APCS-13-16	900-1250	715.5-1113	1.036-1.293	2	16.000	17.750	2.125	0.500
APCS-15-4	1250-1600	1113-1272	1.289-1.459	1	4.000	5.875	2.125	0.625
APCS-15-6	1250-1600	1113-1272	1.289-1.459	2	6.500	8.563	2.125	0.625
APCS-15-8	1250-1600	1113-1272	1.289-1.459	2	8.000	9.875	2.125	0.500
APCS-15-12	1250-1600	1113-1272	1.289-1.459	2	12.000	13.875	2.125	0.500
APCS-16-3	1500-2000	1272-1590	1.382-1.632	1	3.000	5.063	2.125	0.625
APCS-16-4	1500-2000	1272-1590	1.382-1.632	2	4.000	6.063	2.125	0.625
APCS-16-5	1500-2000	1272-1590	1.382-1.632	2	5.000	7.063	2.125	0.625
APCS-16-6	1500-2000	1272-1590	1.382-1.632	2	6.000	8.063	2.125	0.625
APCS-16-6.5	1500-2000	1272-1590	1.382-1.632	2	6.500	8.563	2.125	0.625
APCS-16-8	1500-2000	1272-1590	1.382-1.632	2	8.000	10.063	2.125	0.625
APCS-16-12	1500-2000	1272-1590	1.382-1.632	2	12.000	14.063	2.125	0.625
APCS-16-18	1500-2000	1272-1590	1.382-1.632	2	18.000	20.250	2.125	0.625
APCS-18-4	2000-2500	2156-2167	1.632-1.824	1	4.000	6.250	2.125	0.625
APCS-18-8	2000-2500	2156-2167	1.632-1.824	2	8.000	10.250	2.125	0.625
APCS-18-12	2000-2500	2156-2167	1.632-1.824	2	12.000	14.250	2.125	0.625
APCS-18-18	2000-2500	2156-2167	1.632-1.824	2	18.000	20.250	2.125	0.625
APCS-21-4	2500-3000	--	1.823-2.000	1	4.000	6.625	2.125	0.750
APCS-21-8	2500-3000	--	1.823-2.000	2	8.000	10.625	2.125	0.625

CATALOG NUMBER: APCS			
SIZE	DWG NO.	PART / ASSY NO.	REV
C	C-4936	SEE TABLE	22
SCALE: NS	DRN BY: KH	DATE: 09/02/62	SHEET 2 OF 2